

Art Daily (artdaily.com)
October 17, 2016



The First Art Newspaper on the Net



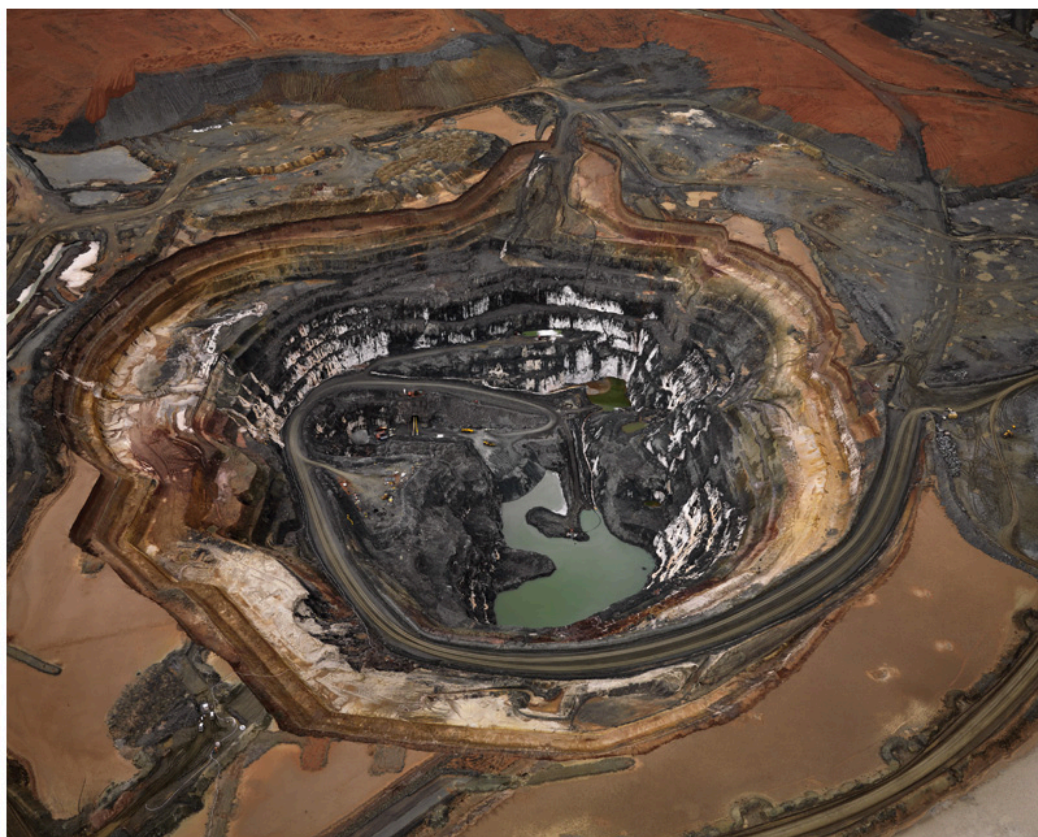
Established in 1996

United States

Monday, October 17, 2016

[Home](#) [Last Week](#) [Artists](#) [Galleries](#) [Museums](#) [Photographers](#) [Games](#) [Subscribe](#) [Comments](#) [Search](#) [Contact](#) [RSS](#)

Special exhibition features large-scale photography by Richard Mosse & Edward Burtynsky



Edward Burtynsky (Canadian, born 1955), Silver Lake Operations # 1, Lake Lefroy, Western Australia, 2007, digital c-print, 39 x 49 inches. ©Edward Burtynsky. Courtesy Nicholas Metivier Gallery, Toronto / Howard Greenberg Gallery & Bryce Wolkowitz Gallery, New York

DAYTON, OH.- [The Dayton Art Institute's](#) "Year of the Classical Elements" comes to a close this fall with Ravaged Sublime: Landscape Photography in the 21st Century, on view October 15, 2016–January 8, 2017.

Ravaged Sublime presents nearly 30 monumental landscape photographs by internationally recognized artists Edward Burtynsky and Richard Mosse. The special exhibition demonstrates the continued interest in landscape imagery, while revealing its evolution through the works of these artists.

"Photographs are not synonymous with truth, and landscapes similarly possess multiple meanings," says Katherine Ryckman Siegwarth, The Dayton Art Institute's Kettering Exhibition Coordinator and Curatorial Associate. "Both are imbued with cultural significance that is ever changing, always evolving, and therefore always relevant."

Utilizing similar visual motifs as 19th-century photographers, such as expansive views that are sublime in both scale and detail, these 21st-century works present a dramatic shift in tone and intent. No longer do these images speak to human possibilities or nature's hold over humans; the artworks presented highlight human traces that have ravaged the landscape. Through their large scale—some are over 6 by 8 feet in dimension—these photographs lure audiences into a new and previously unseen terrain, inviting visitors to consider their place within the larger global landscape.

Organized by The Dayton Art Institute and curated by Katherine Ryckman Siegwarth, this original exhibition is a participating venue of this year's FotoFocus, the Cincinnati lens-based biennial.

Edward Burtynsky is known as one of Canada's most respected photographers. His remarkable photographic depictions of global industrial landscapes are included in the collections of over 60 major museums around the world, including the National Gallery of Canada, the Museum of Modern Art, the Guggenheim Museum in New York, the Reina Sofia Museum in Madrid, and the Los Angeles County Museum of Art in California.

Richard Mosse was born in Ireland and is based in New York. He earned an MFA in Photography from Yale School of Art in 2008 and a Postgraduate Diploma in Fine Art from Goldsmiths, London in 2005. He is the winner of the 2014 Deutsche Börse Photography Prize and in 2013 represented Ireland in the Venice Biennale with the *The Enclave*, an immersive six-channel video installation that utilized 16mm infrared film. Mosse has exhibited internationally, and his work is part of many public collections including The Portland Art Museum; the Martin Margulies Collection, Miami; The Museum of Fine Arts, Houston; The Museum of Contemporary Art, Chicago; and The Nelson Atkins Museum, Kansas City.

Mosse will be at The Dayton Art Institute on Thursday, October 27, to speak about his work. The talk takes place at 6:30 p.m. in the museum's Renaissance Auditorium; tickets are \$5 for museum members and FotoFocus Passport holders, \$10 for non-members. A special combination ticket that also includes admission to the special exhibition is \$15 for FotoFocus Passport holders and \$20 for non-members.